



AASHTO SCORT | October 4, 2016

*North Carolina Station Program*

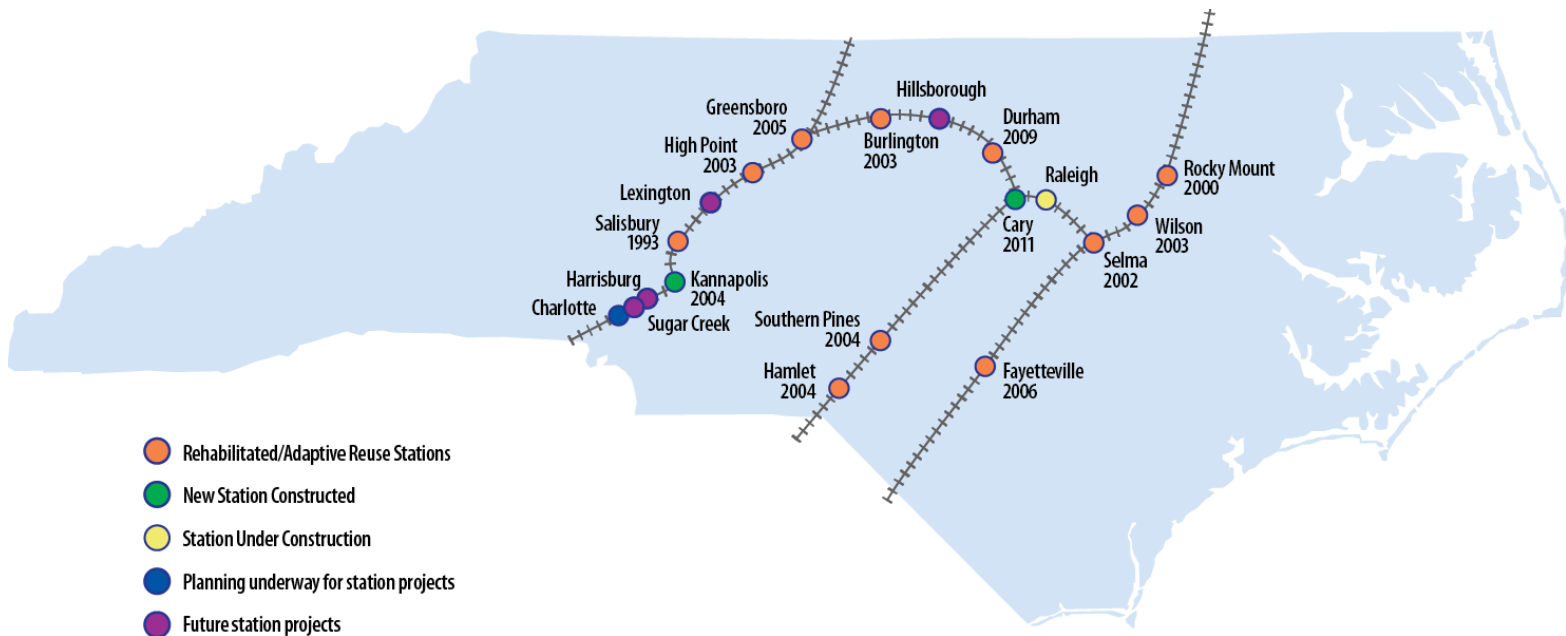
Paul C. Worley, NCDOT Rail Division Director



# *Good Stations + Right Location Impact Ridership*

## *Building the Bookends of NC By Train Service*

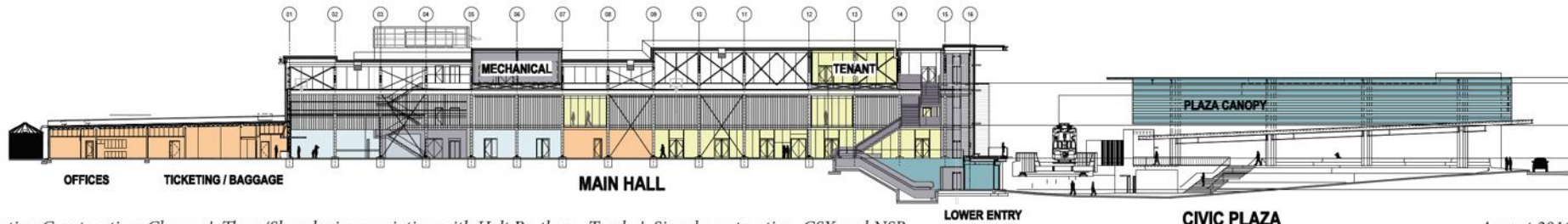
- Passenger stations serve as catalysts for city center economic development.
- The North Carolina Department of Transportation is proud to have partnered with the Federal Highway Administration (FHWA), Federal Transit Administration (FTA), local communities and freight railroads to restore historic properties and build new stations.



# Raleigh Union Station (RUS)

- NCDOT and City of Raleigh are building a new train station in downtown to accommodate current and future demand of intercity passenger rail
- Replaces current Amtrak Station that cannot accommodate demand or expected ridership growth

Project Cost	
Local	\$26.76M
State	\$9M
Federal (FRA): TIGER and ARRA	\$53M
Congestion Mitigation	\$14.9M
Total	\$103.66M



Station Construction: Clancy & Theys/Skanska in association with Holt Brothers Track & Signal construction: CSX and NSR

August 2016

# Raleigh Union Station (RUS)

## Timeline

2013-15

Station and track design, funding, environmental, ROW, public input

January 2016

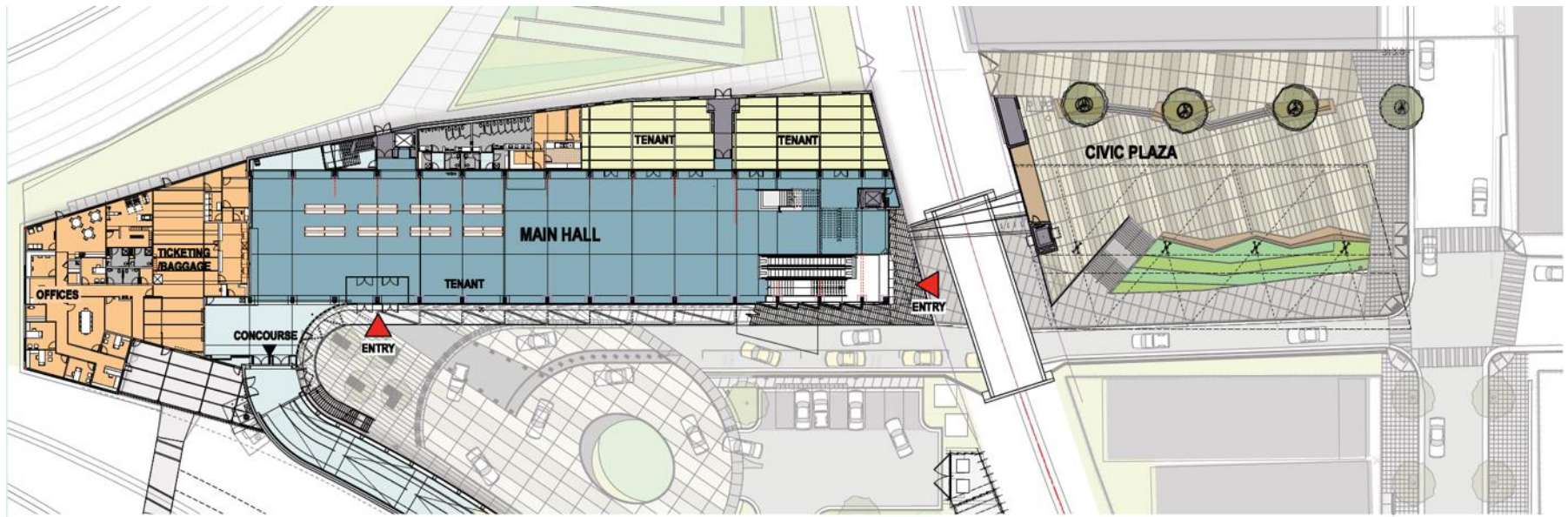
Station construction began

May 2016

Track and signal work began

January 2018

Station will be complete



- RUS reuses industrial building that has been vacant since 2005
- The 26,000 square foot building will provide 9,200 sq. ft. of passenger space – five times that of the current station

# *Raleigh Union Station Project Team February 2016*



# *Raleigh Union Station Construction*

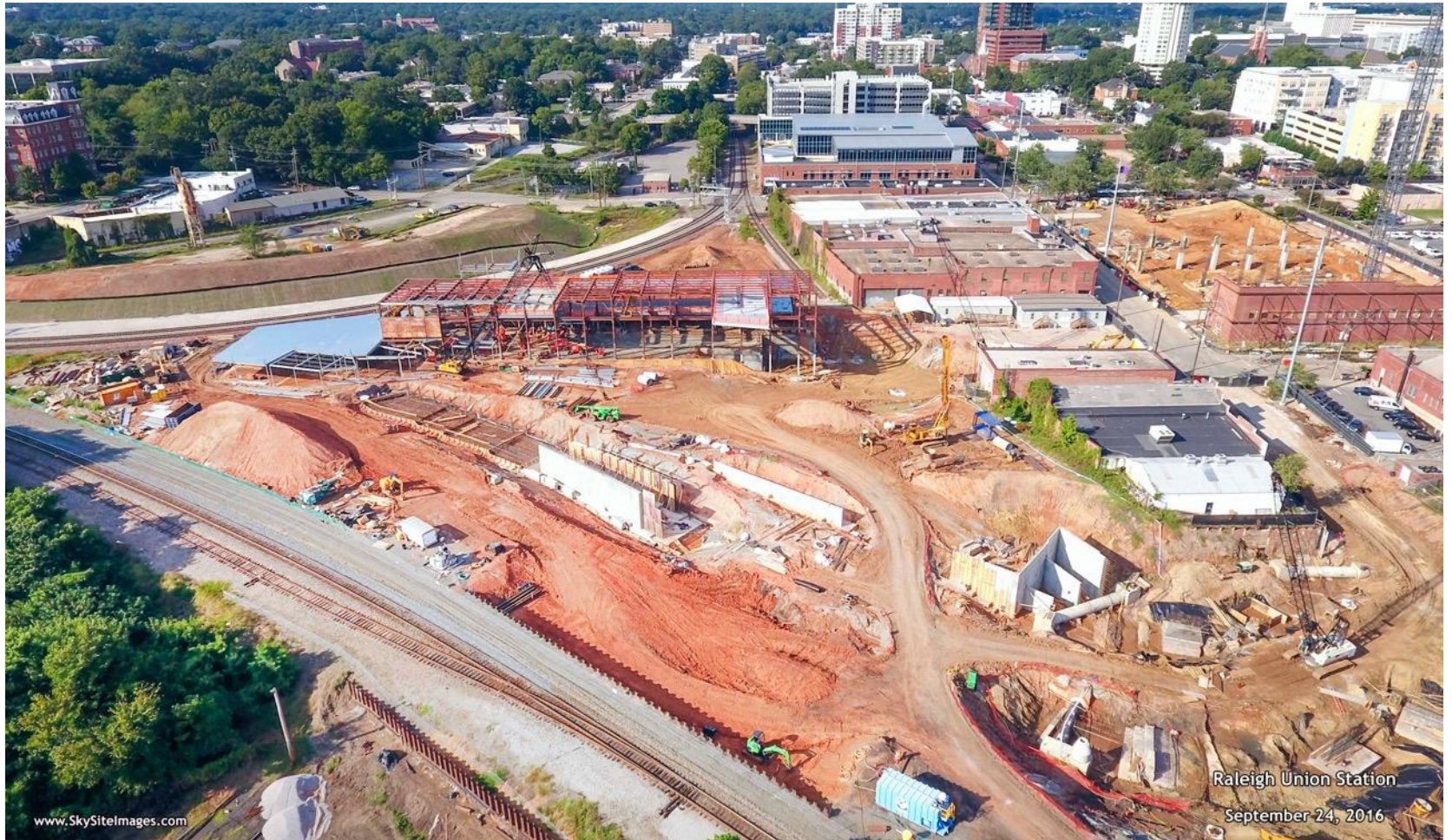


www.SkySiteImages.com

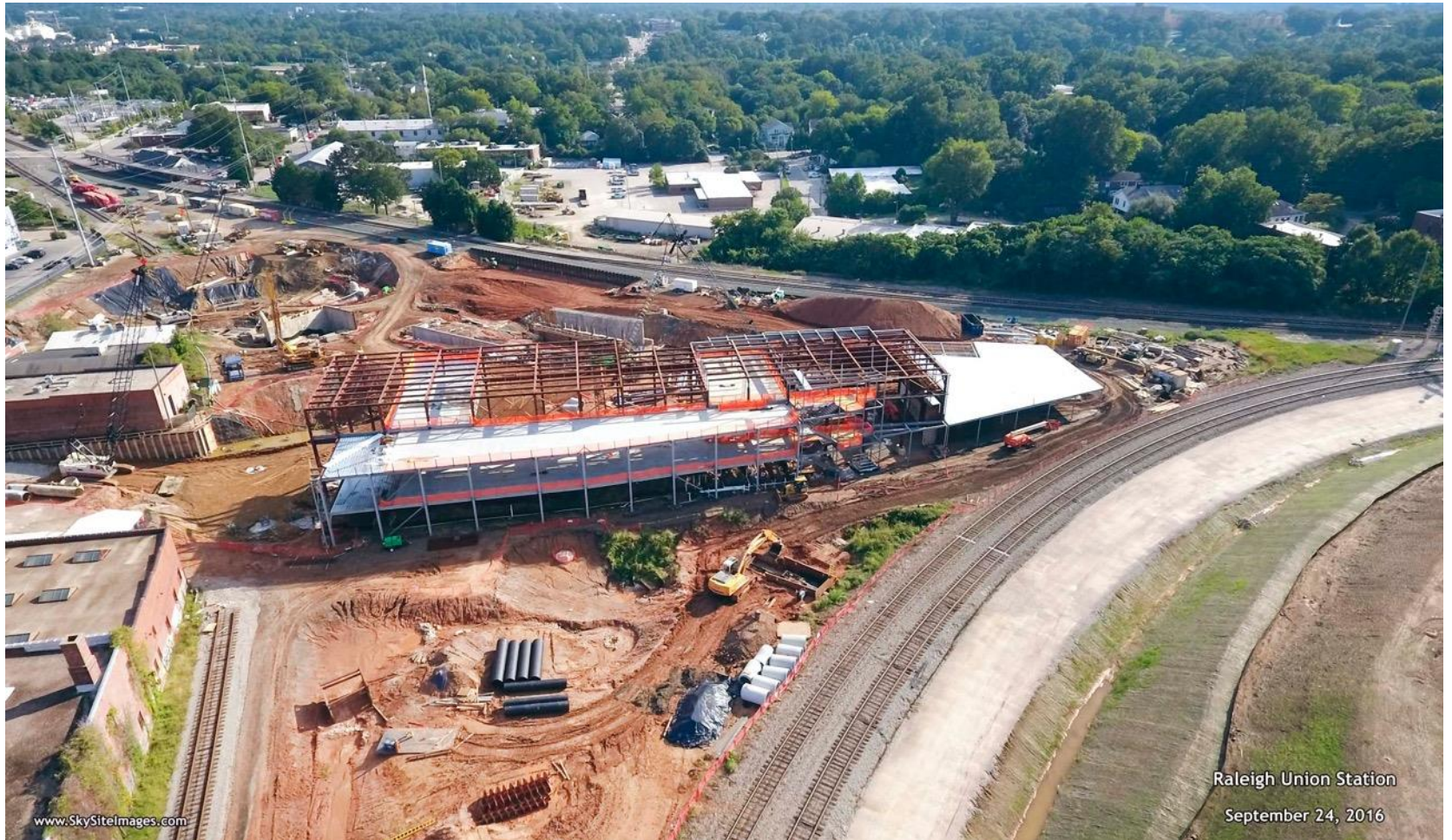
Raleigh Union Station

September 24, 2016

# *Raleigh Union Station Construction*



# *Raleigh Union Station Construction*



Raleigh Union Station

September 24, 2016

www.SkySiteImages.com



# *Charlotte Gateway Station*

***The Charlotte Gateway Station project is gaining significant momentum in Uptown Charlotte!***

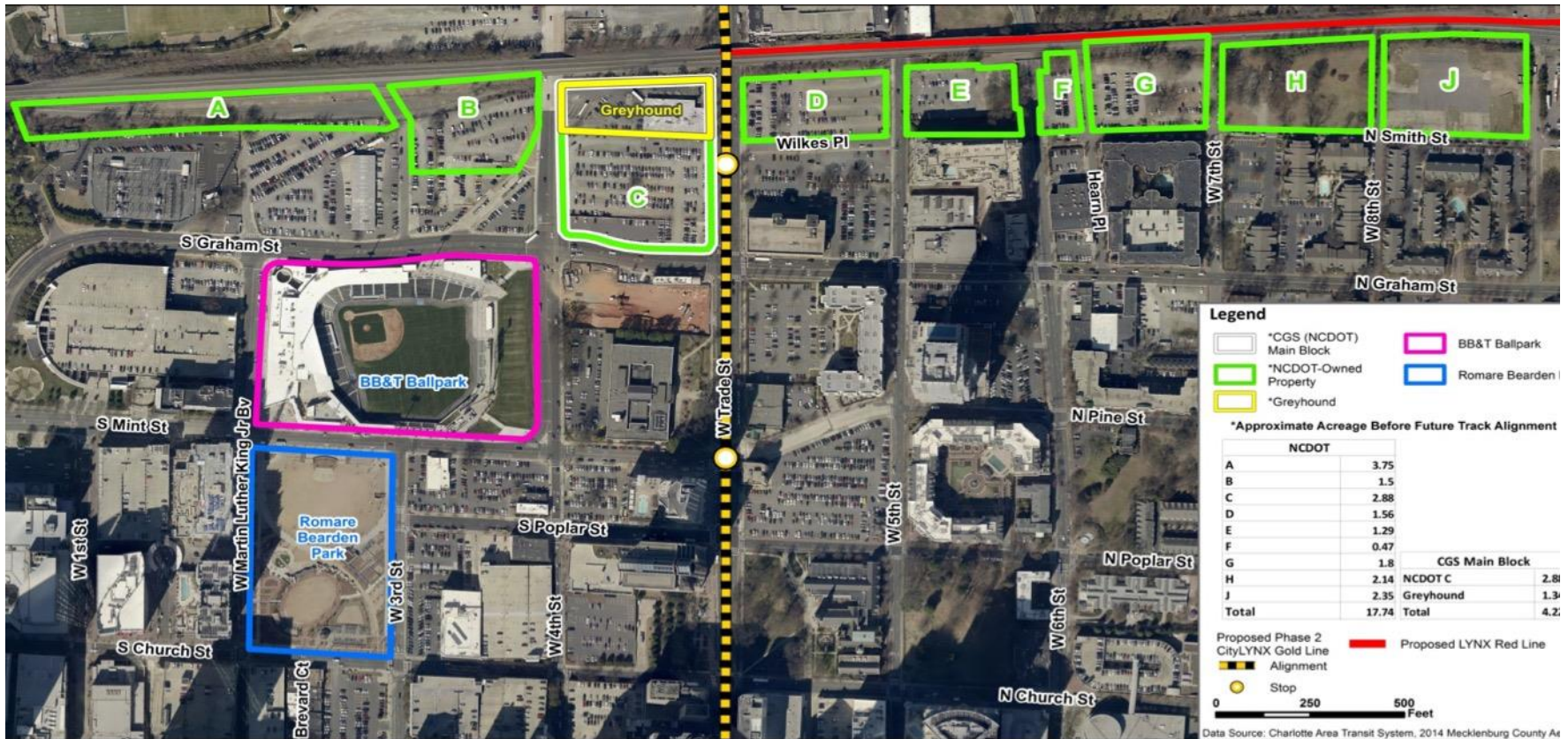
- Will provide better access to Uptown for business travelers and a world class gateway for visitors to the metropolitan amenities in North Carolina's largest city
- Consolidates transportation modes in city center
- Replaces current Amtrak Station located 2.5 miles from downtown



*Current station platform and station*

# NCDOT Owned Property Makes this Project Possible

- NCDOT acquisition of essential properties since the early 1990s provides options



# *Phase I – Getting to the Station Track, Structures, and Signals*

- Five new bridges at West 4th, West Trade, West 5th, West 6th and at Cedar Street Connection
- Two 2,000 foot long station tracks will separate passenger trains from freight operations
- Improves freight traffic flow to the Norfolk Southern intermodal facility at CLT airport
- Includes connection to NCDOT Charlotte Locomotive and Rail Maintenance Facility (LRMF)
- Engineering plans underway along with approvals and agreements with Norfolk Southern

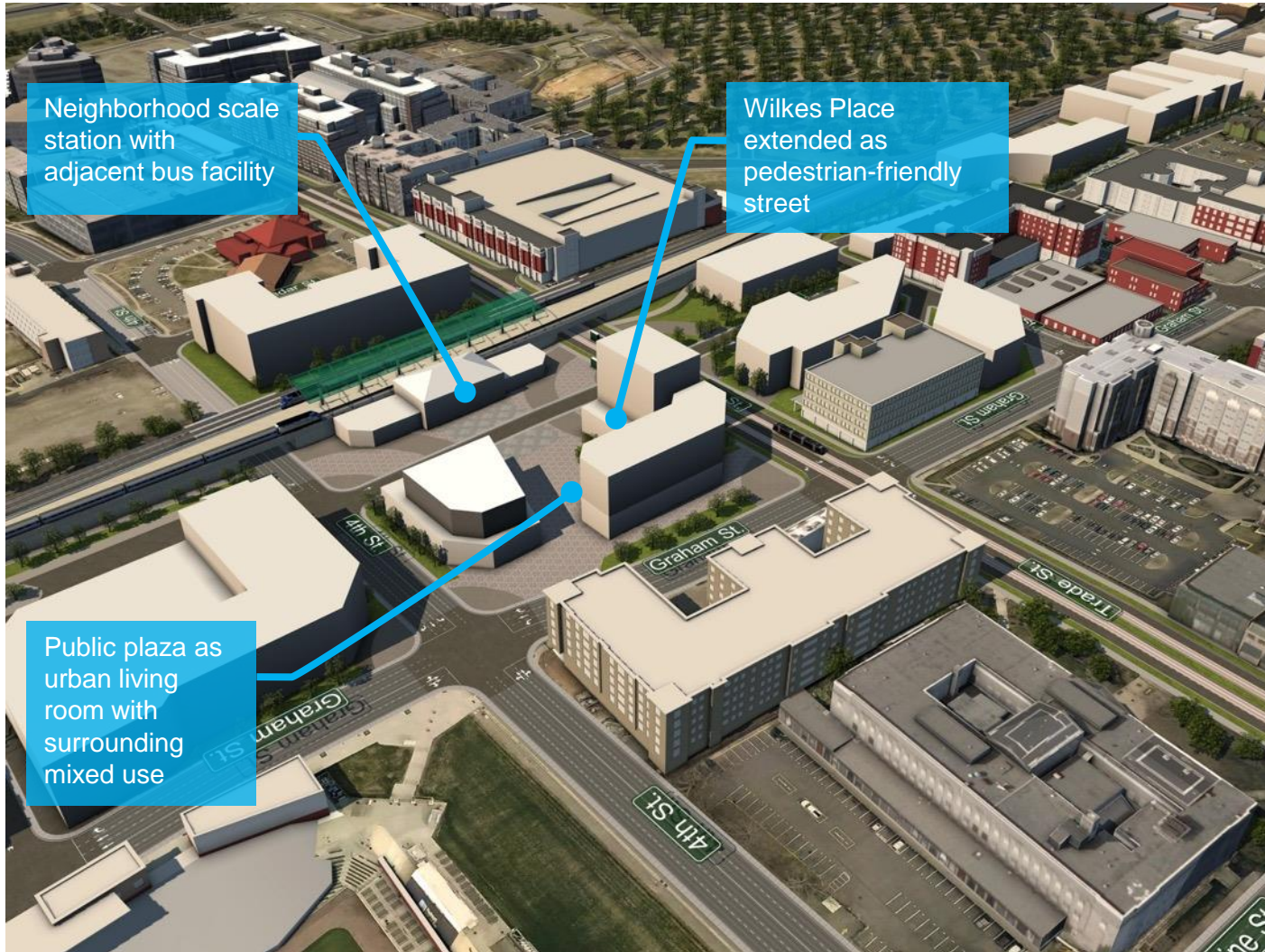
Anticipated Funding	Amount
USDOT <b>TIGER</b> VII Funding	\$25M
Federal, State and Local Funds	\$45M
Estimate and Funding	\$70M

## *Phase II – Re-visioning and Building Charlotte Gateway Station*

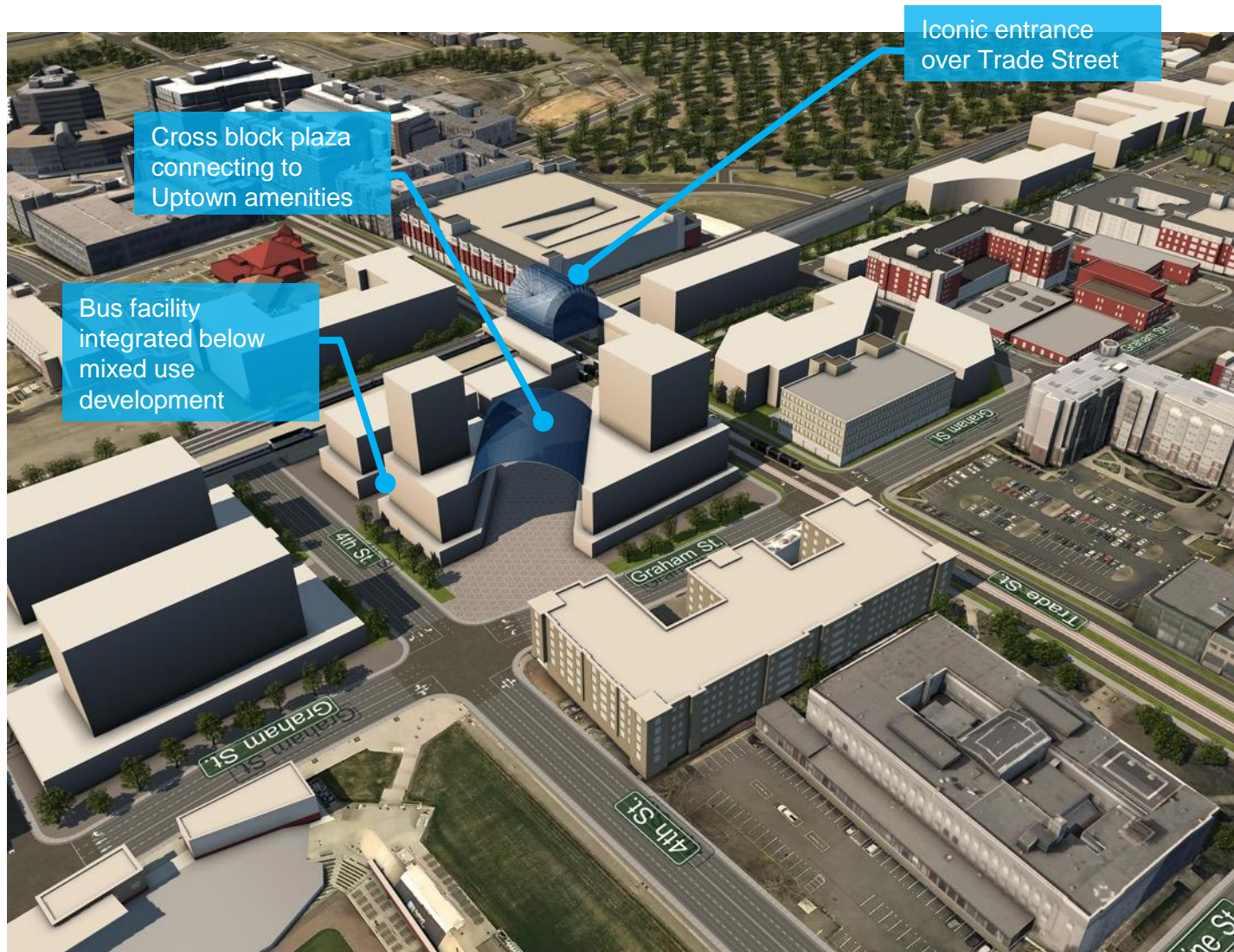
- Multimodal projects like the Gateway Station – essential to expanding access to NC’s public transportation network – an important element of Governor McCrory’s 25-Year Plan
- **Multimodal Station Area Plan** (funded by TIGER) underway by NCDOT
  - Study objective: to define a vision to develop the station as a component of a phased transportation plan for the project sponsors: NCDOT, City of Charlotte, Mecklenburg County, CATS, Charlotte Center City Partners
  - Provides an updated approach to project, incorporates stakeholder input
  - Three station concepts developed



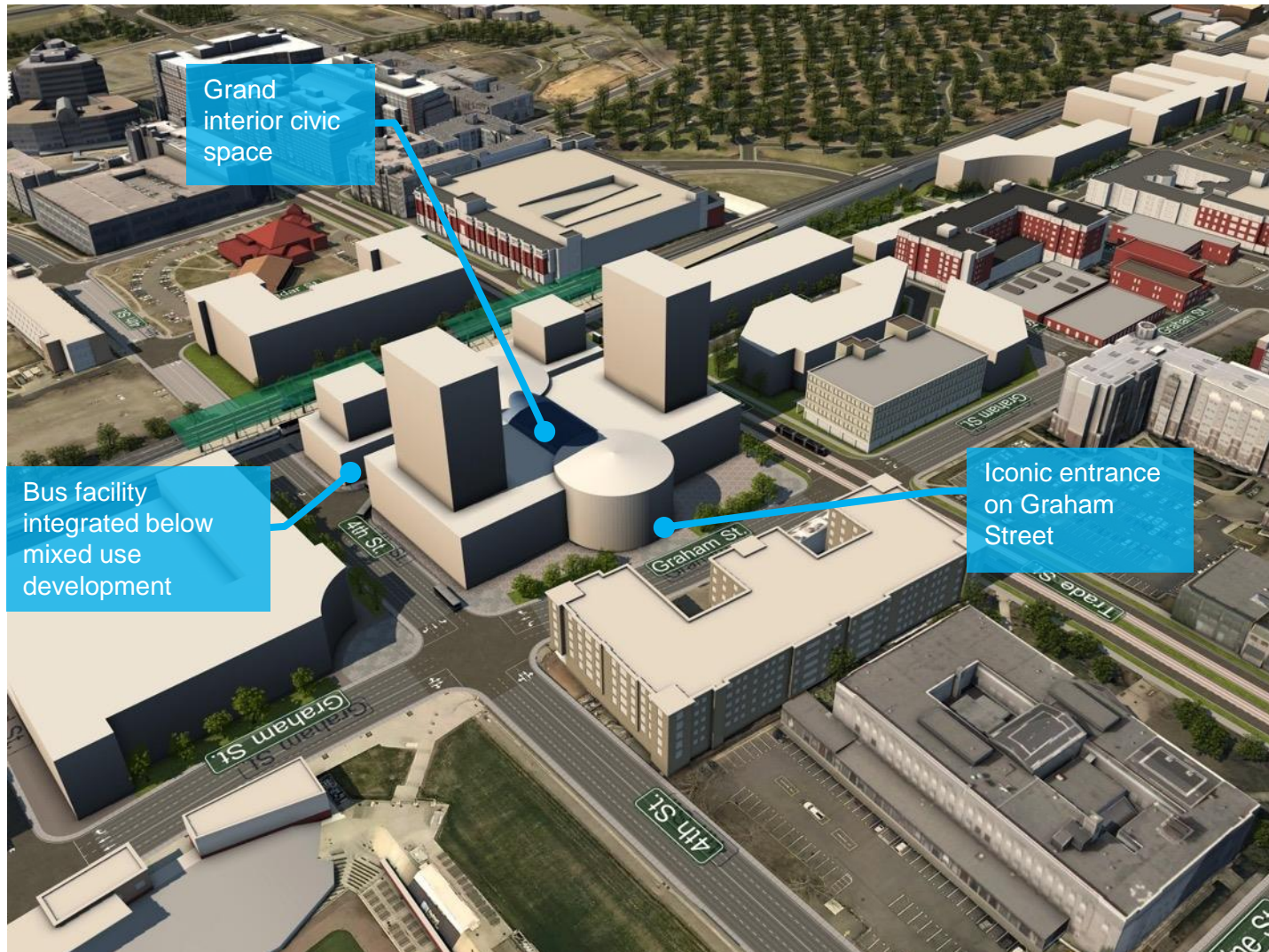
# Charlotte Gateway Station Wilkes Extension



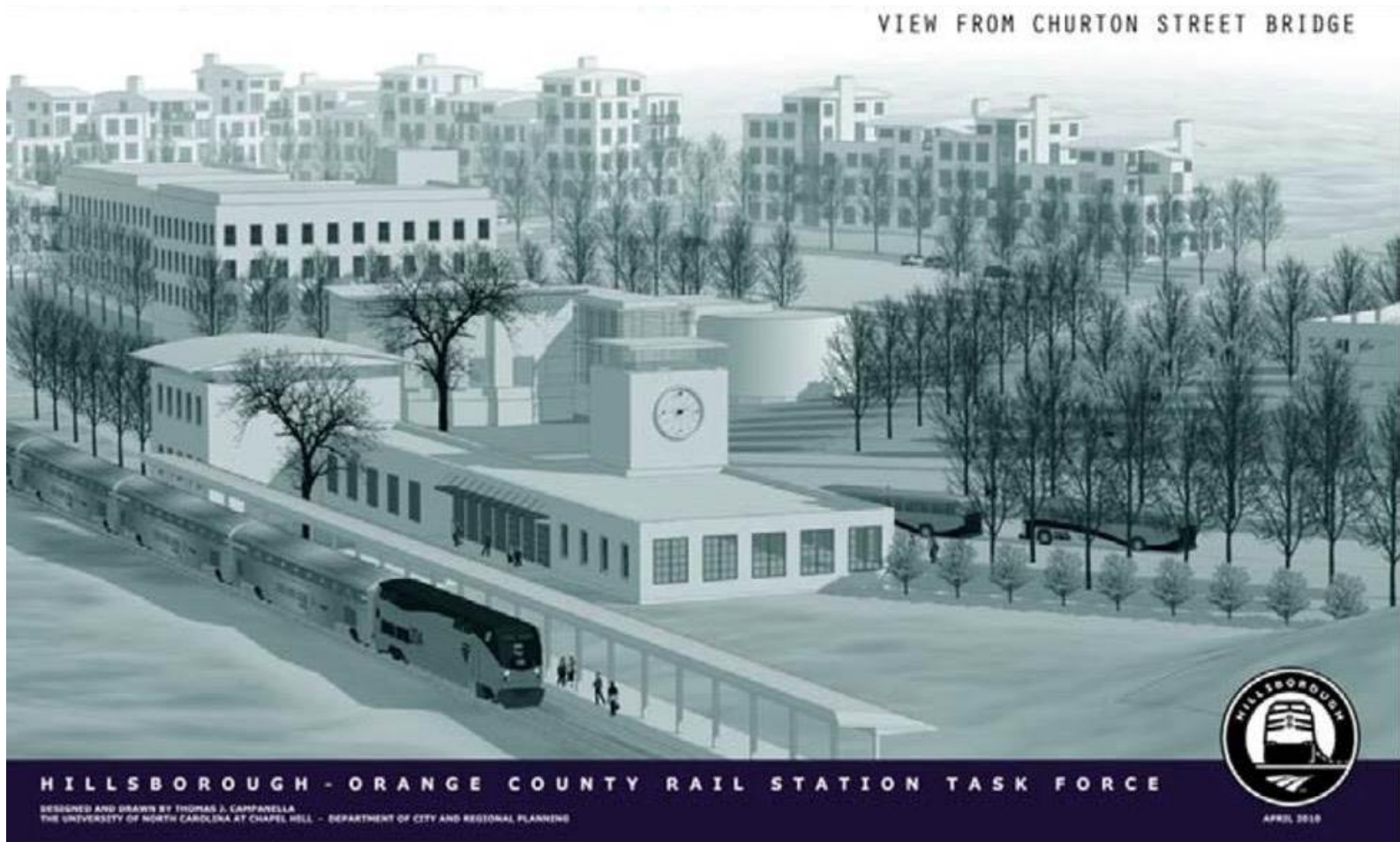
# Charlotte Gateway Station Bridge Station



# Charlotte Gateway Station Atrium Station



# Hillsborough Station



- State STI 3.0 awarded \$7.2M funding
- Project funding available mid-2018



# Hillsborough Station Site Plan

- Station will serve as a multimodal center for the town



HILLSBOROUGH TRAIN STATION  
CONCEPT

MARCH 2016

SCALE: 1" = 200'-0"



## *Future Stations*



- Lexington Station – study underway (TIGER 2), EA ready for signature, with FONSI underway
- Harrisburg Station – site selection study complete
- NCR's Sugar Creek Station – study in progress